

THE
 **WAYNE**
FRAMEWORK

Organizing Ideas

An aerial, grayscale photograph of a university campus. The central core, consisting of several large, interconnected buildings, is highlighted in a darker shade of grey. The rest of the campus, including various smaller buildings, parking lots, and streets, is shown in lighter shades of grey. The perspective is from an elevated angle, looking down at the campus layout.

ORGANIZING IDEAS

1. Organize around the "H"
2. Ensure permeability within the core campus
3. Establish campus gateways

STRATEGIC GOALS

1. Concentrate academic activity in an enhanced core
2. Strategically eliminate underperforming square footage
3. Define key sites for long-term development
4. Promote future optionality for Health Sciences
5. Focus the university's real estate strategy

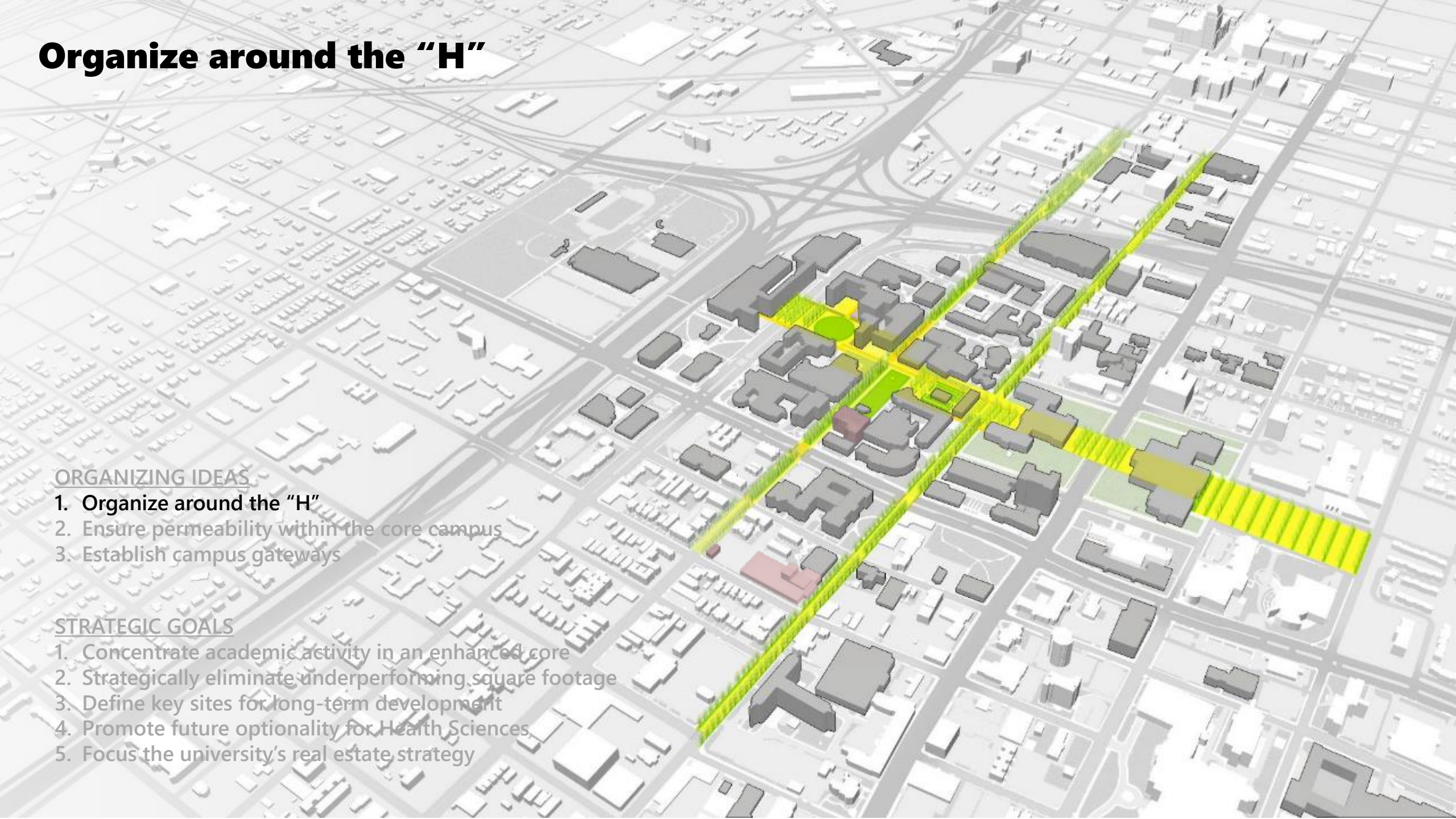
Organize around the "H"

ORGANIZING IDEAS

1. Organize around the "H"
2. Ensure permeability within the core campus
3. Establish campus gateways

STRATEGIC GOALS

1. Concentrate academic activity in an enhanced core
2. Strategically eliminate underperforming square footage
3. Define key sites for long-term development
4. Promote future optionality for Health Sciences
5. Focus the university's real estate strategy



Organize around the "H"

Reimagine Fountain Court



Penn State Pattee Mall





Organize around the "H"

Extend closure of 2nd one block southward



Organize around the "H"

Transform Cass into a civic street



The Corner, Charlottesville, VA



Telegraph Avenue, Berkeley, CA



N High St, Short North Arts District, Columbus, OH



Harvard Square, Cambridge MA

Organize around the "H"

Keast Commons

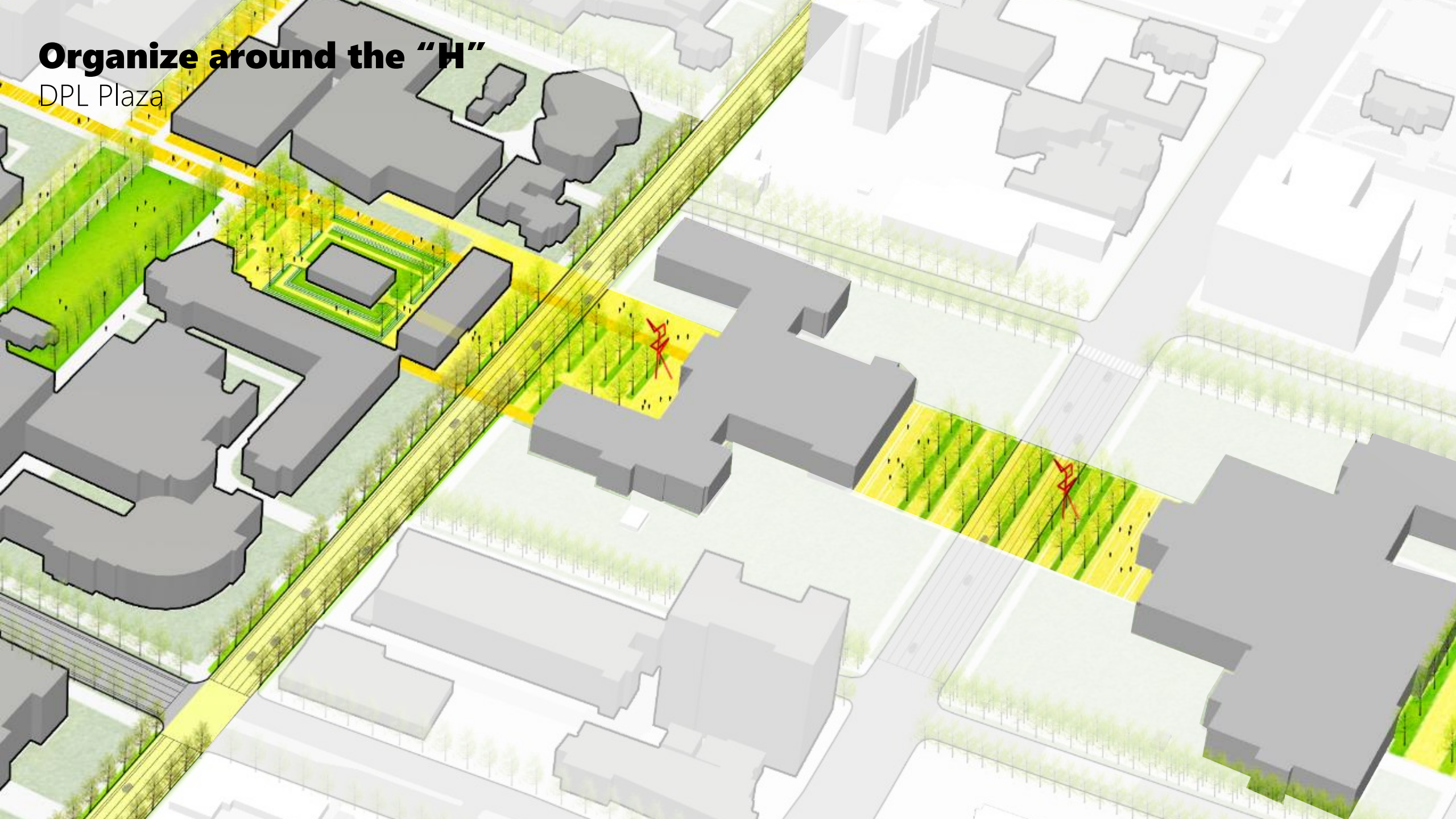


Madrid's Plaza Mayor



Organize around the "H"

DPL Plaza



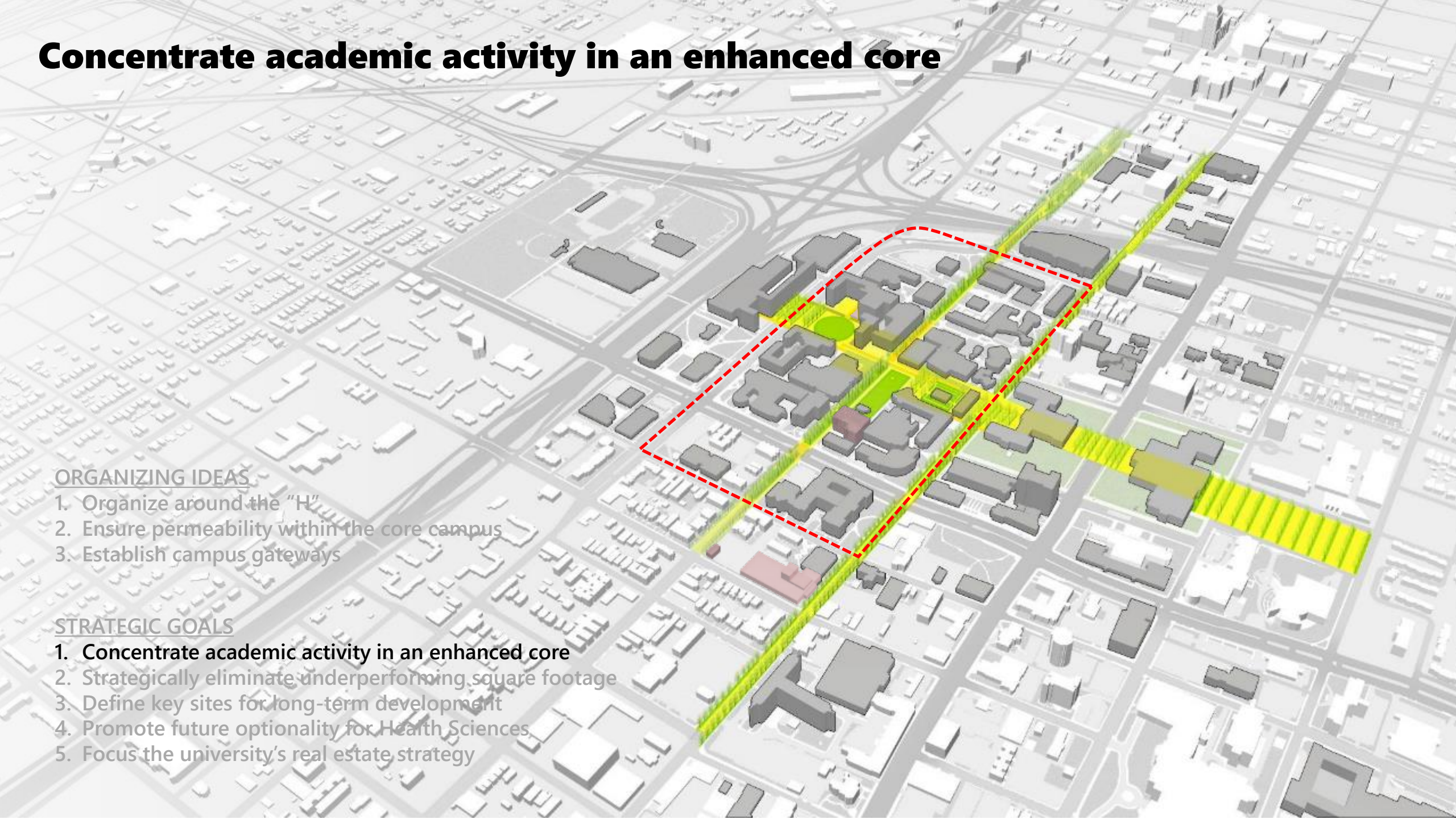
Concentrate academic activity in an enhanced core

ORGANIZING IDEAS

1. Organize around the "H"
2. Ensure permeability within the core campus
3. Establish campus gateways

STRATEGIC GOALS

1. **Concentrate academic activity in an enhanced core**
2. Strategically eliminate underperforming square footage
3. Define key sites for long-term development
4. Promote future optionality for Health Sciences
5. Focus the university's real estate strategy



Ensure permeability within the core campus

Narrow Warren Avenue



WARREN

A 3D architectural rendering of a campus layout. A central corridor, Warren Avenue, is highlighted in yellow and red, indicating its importance and permeability. The surrounding campus buildings are shown in grey and white. A dashed black line outlines the area around Warren Avenue. The text 'WARREN' is written in a bold, sans-serif font along the highlighted corridor.

ORGANIZING IDEAS

1. Organize around the "H"
- 2. Ensure permeability within the core campus**
3. Establish campus gateways

STRATEGIC GOALS

1. Concentrate academic activity in an enhanced core
2. Strategically eliminate underperforming square footage
3. Define key sites for long-term development
4. Promote future optionality for Health Sciences
5. Focus the university's real estate strategy

Ensure permeability within the core campus

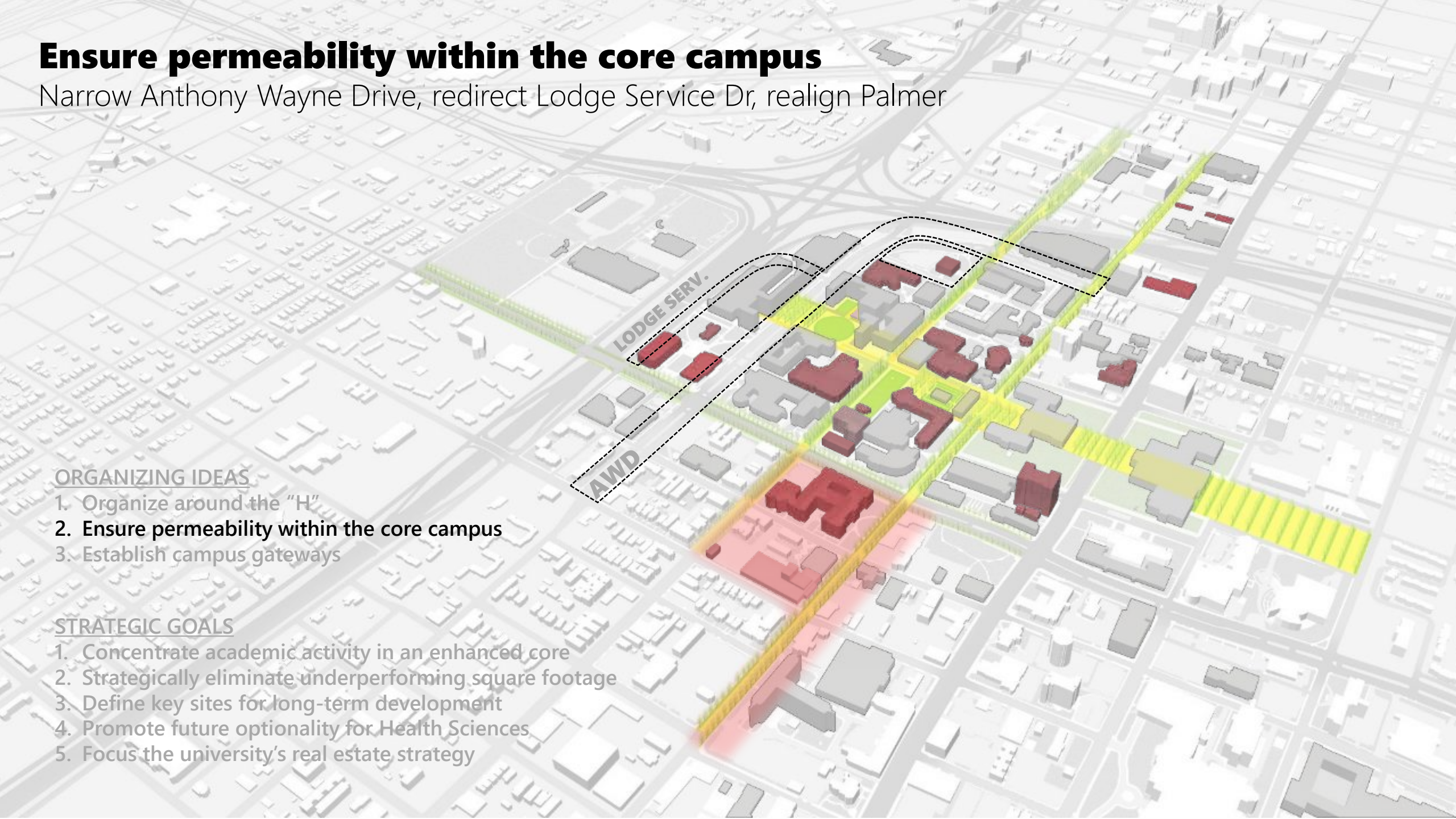
Narrow Anthony Wayne Drive, redirect Lodge Service Dr, realign Palmer

ORGANIZING IDEAS

1. Organize around the "H"
2. **Ensure permeability within the core campus**
3. Establish campus gateways

STRATEGIC GOALS

1. Concentrate academic activity in an enhanced core
2. Strategically eliminate underperforming square footage
3. Define key sites for long-term development
4. Promote future optionality for Health Sciences
5. Focus the university's real estate strategy



Ensure permeability within the core campus

Narrow Anthony Wayne Drive

Examples of activated boulevards in Tel Aviv





**LAW
SCHOOL**

**Parki
Struc**

Palmer Ave

Ensure permeability within the core campus

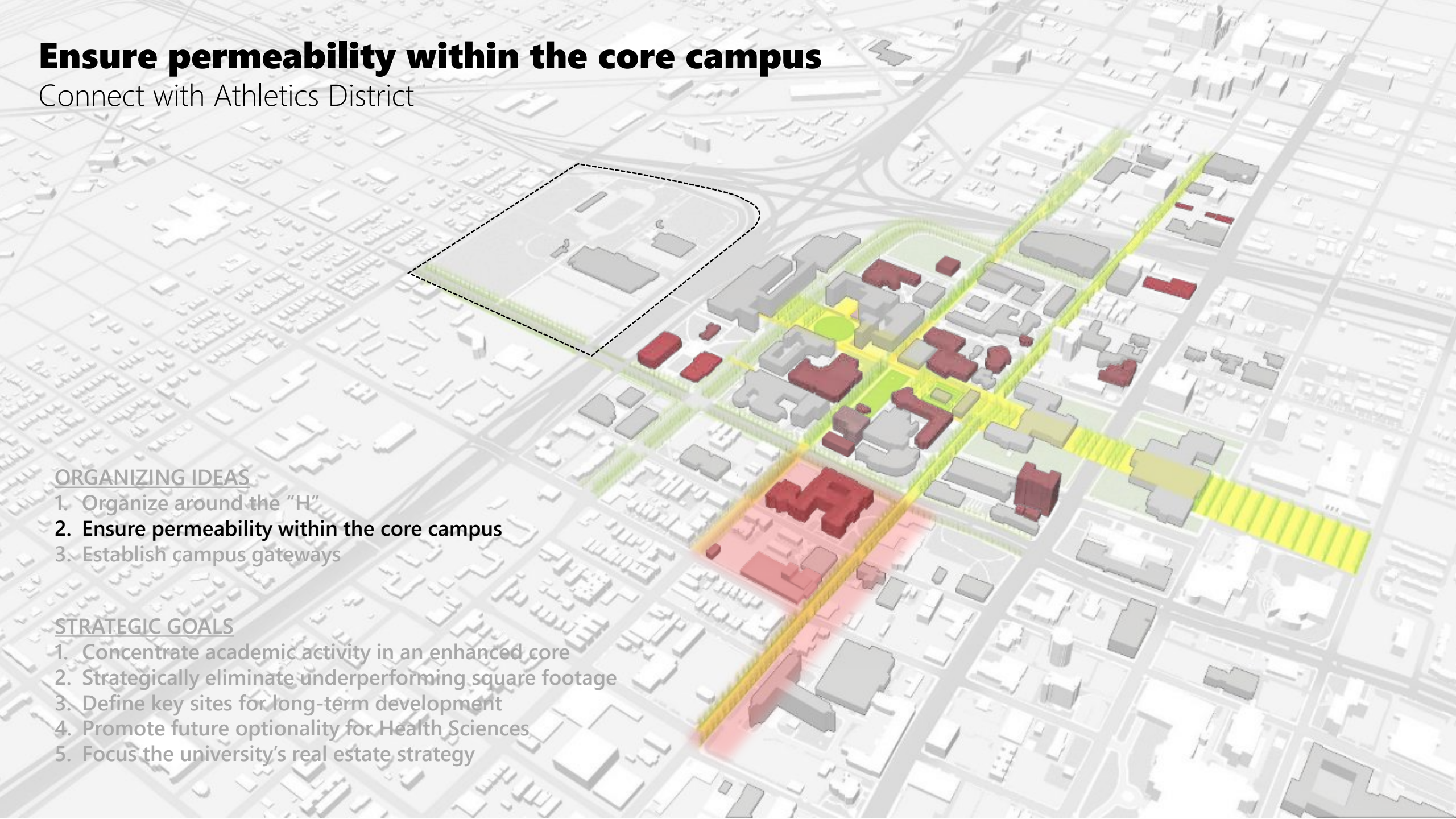
Connect with Athletics District

ORGANIZING IDEAS

1. Organize around the "H"
2. **Ensure permeability within the core campus**
3. Establish campus gateways

STRATEGIC GOALS

1. Concentrate academic activity in an enhanced core
2. Strategically eliminate underperforming square footage
3. Define key sites for long-term development
4. Promote future optionality for Health Sciences
5. Focus the university's real estate strategy



Ensure permeability within the core campus

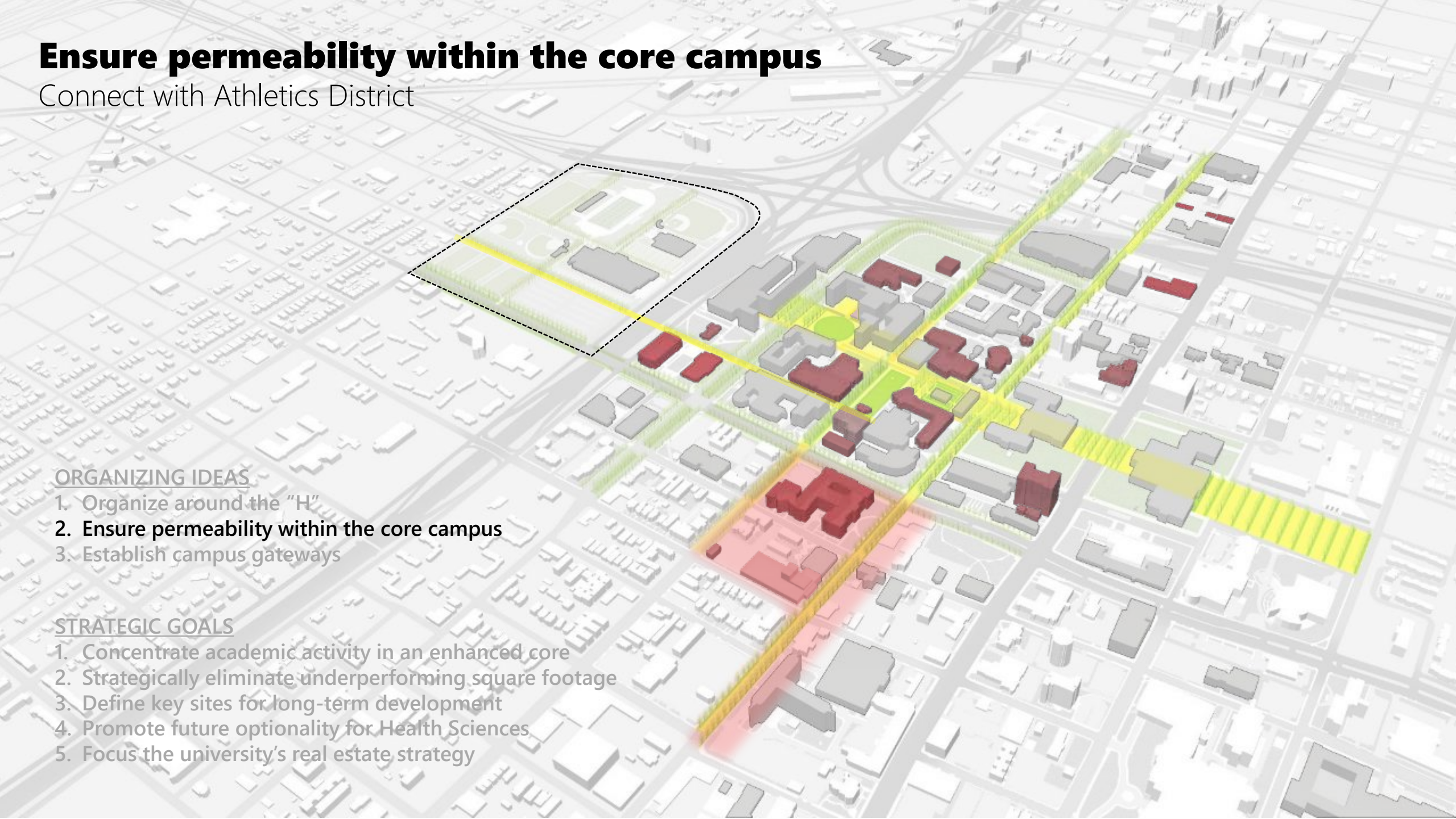
Connect with Athletics District

ORGANIZING IDEAS

1. Organize around the "H"
2. **Ensure permeability within the core campus**
3. Establish campus gateways

STRATEGIC GOALS

1. Concentrate academic activity in an enhanced core
2. Strategically eliminate underperforming square footage
3. Define key sites for long-term development
4. Promote future optionality for Health Sciences
5. Focus the university's real estate strategy



Ensure permeability within the core campus

Deck I-94

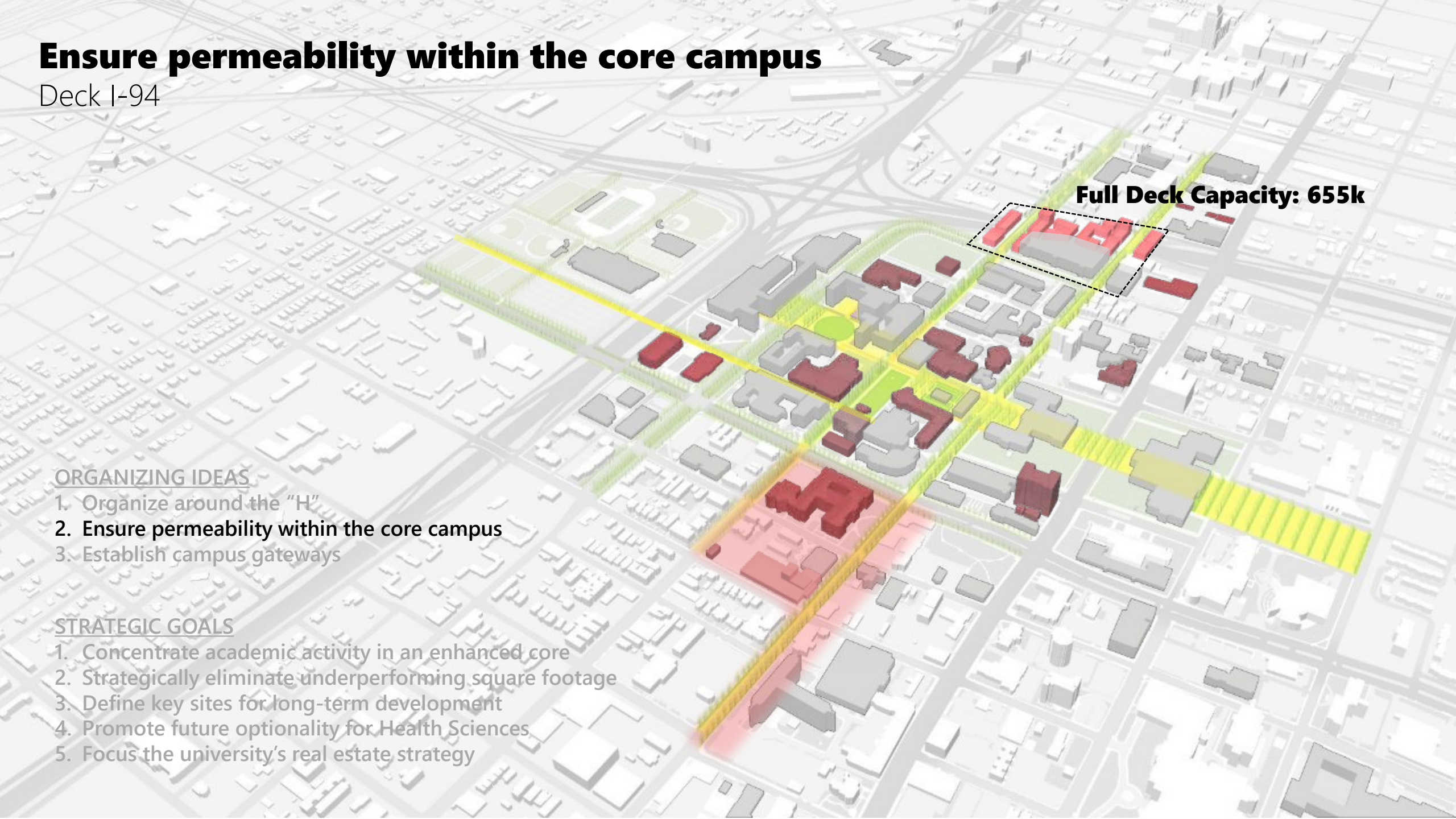
Full Deck Capacity: 655k

ORGANIZING IDEAS

1. Organize around the "H"
2. **Ensure permeability within the core campus**
3. Establish campus gateways

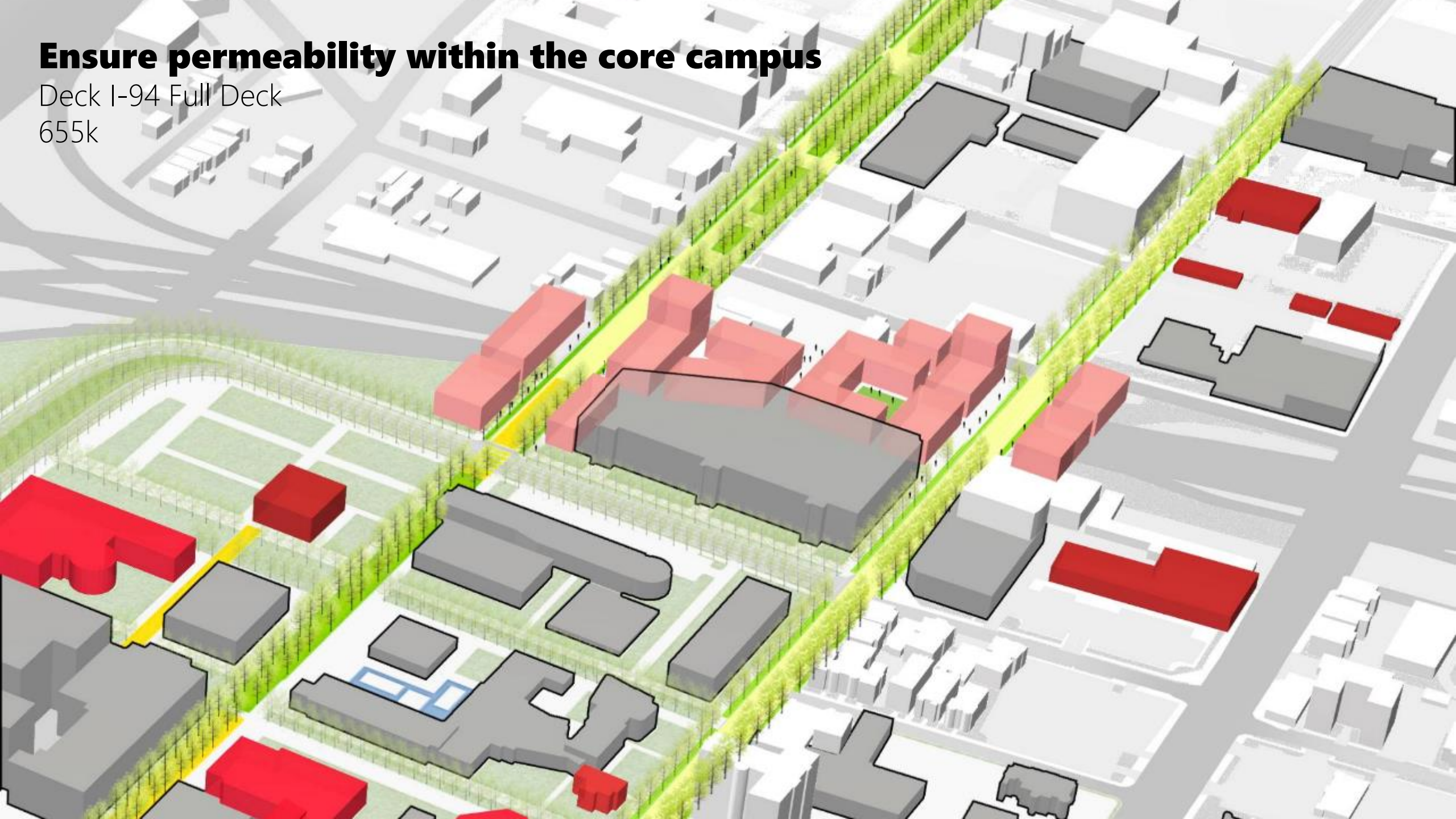
STRATEGIC GOALS

1. Concentrate academic activity in an enhanced core
2. Strategically eliminate underperforming square footage
3. Define key sites for long-term development
4. Promote future optionality for Health Sciences
5. Focus the university's real estate strategy



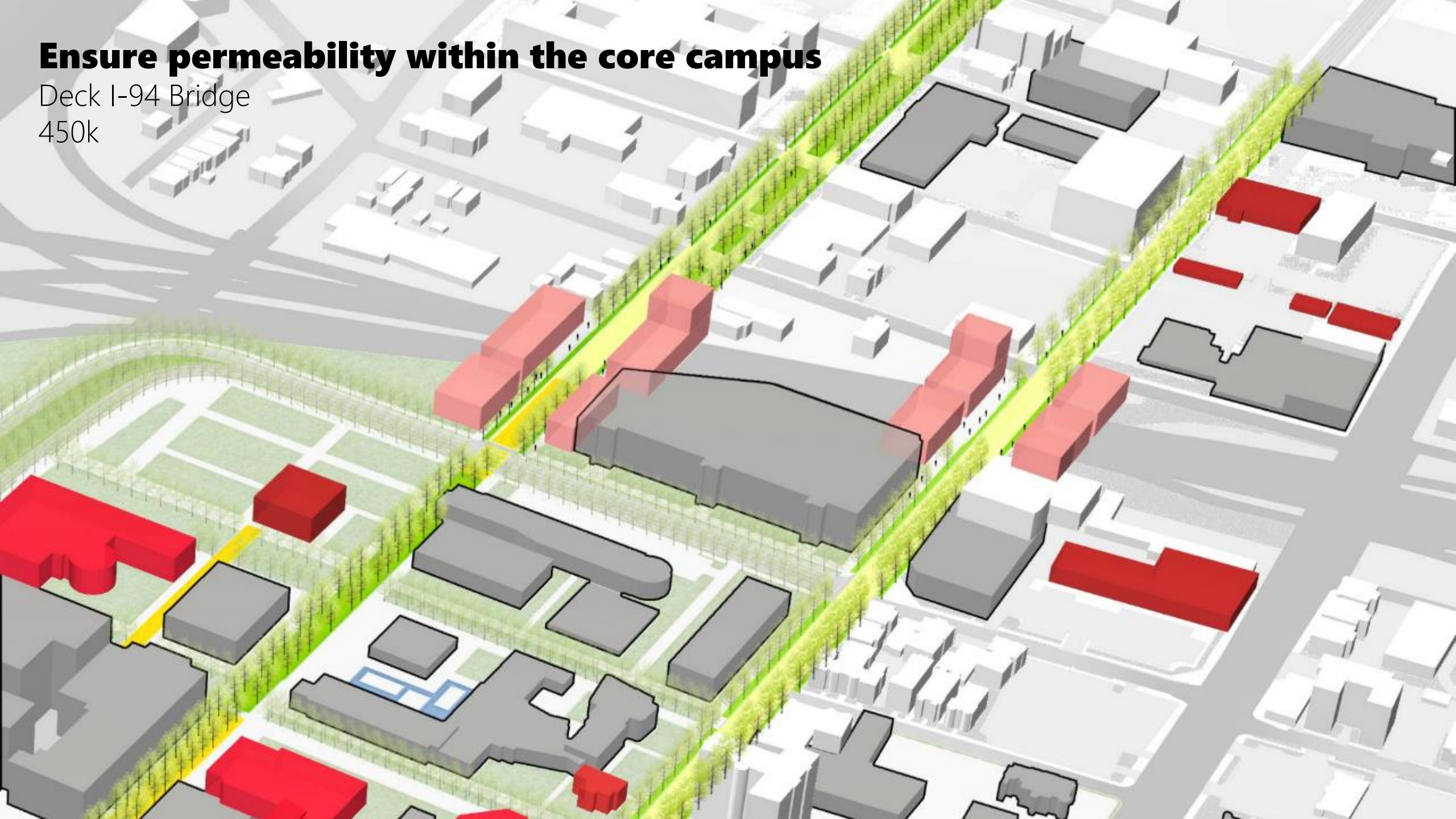
Ensure permeability within the core campus

Deck I-94 Full Deck
655k



Ensure permeability within the core campus

Deck I-94 Bridge
450k



Establish campus gateways

ORGANIZING IDEAS

1. Organize around the "H"
2. Ensure permeability within the core campus
3. Establish campus gateways

STRATEGIC GOALS

1. Concentrate academic activity in an enhanced core
2. Strategically eliminate underperforming square footage
3. Define key sites for long-term development
4. Promote future optionality for Health Sciences
5. Focus the university's real estate strategy

NORTH GATEWAY

GRADUATE AND
PROFESIONAL
RESIDENTIAL
800 BEDS, 540K GSF

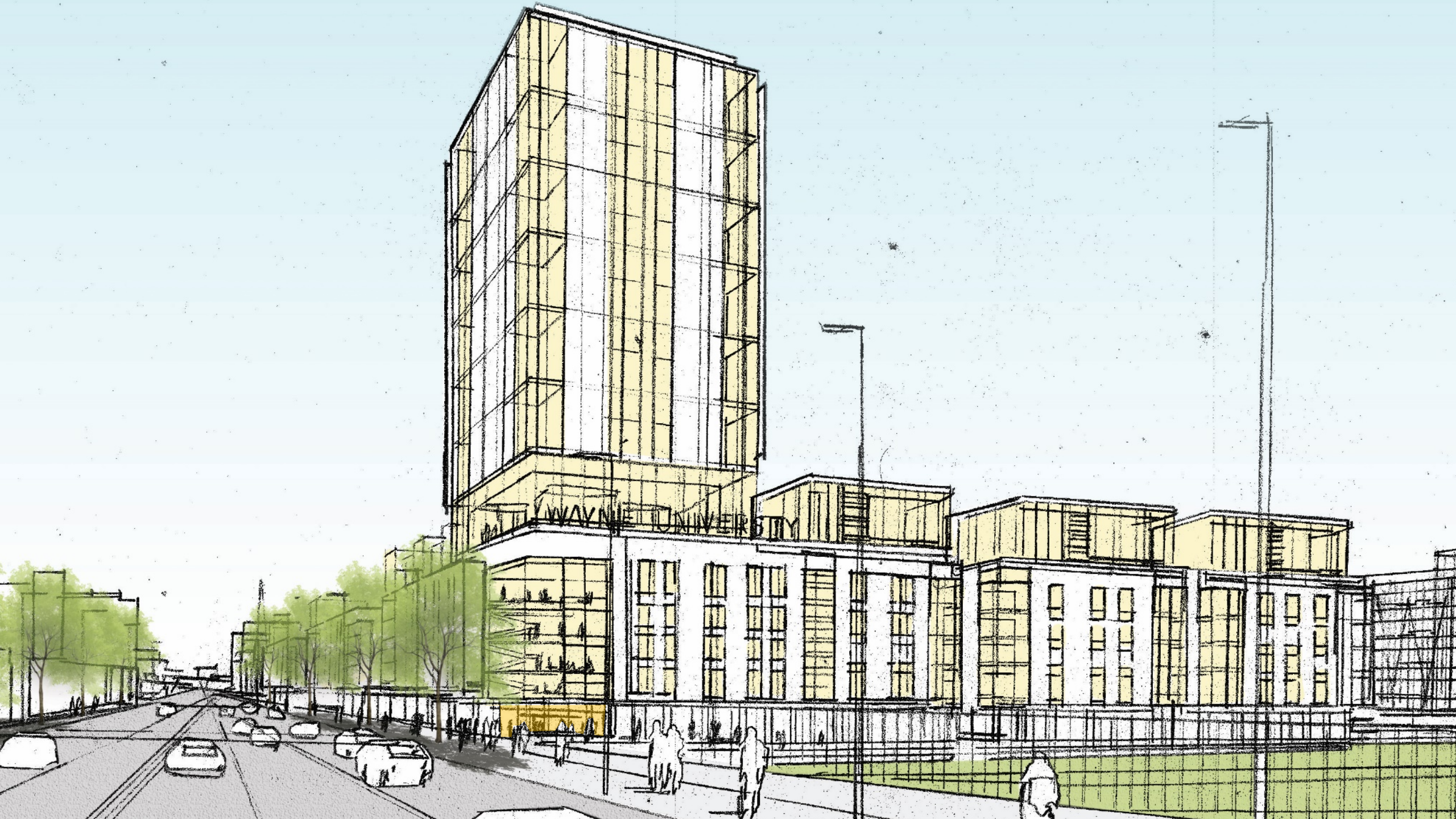
WARREN GATEWAY

INTERIM GREENSPACE
FUTURE DEVELOPMENT
245K

SOUTH GATEWAY

JUNIORS AND SENIORS RESIDENTIAL
1600 BEDS, 460K GSF





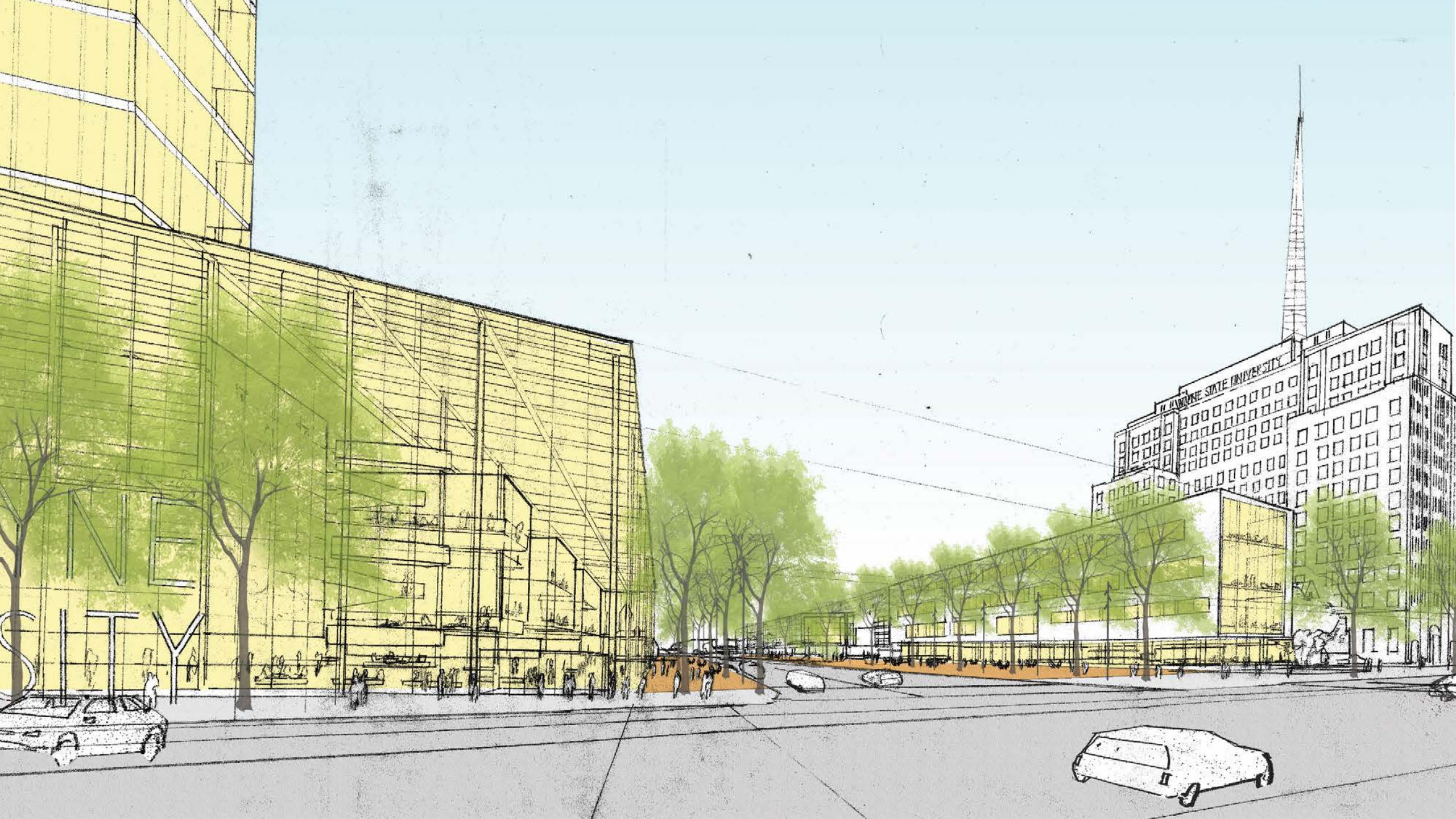


©2016 Google

E 35







Discussion

An aerial, grayscale photograph of a university campus. The central core of the campus is highlighted with a darker shade of gray, showing a dense cluster of buildings and a grid-like street pattern. The surrounding campus area is shown in a lighter shade of gray, with a more dispersed building layout and visible parking lots and roads.

ORGANIZING IDEAS

1. Organize around the "H"
2. Ensure permeability within the core campus
3. Establish campus gateways

STRATEGIC GOALS

1. Concentrate academic activity in an enhanced core
2. Strategically eliminate underperforming square footage
3. Define key sites for long-term development
4. Promote future optionality for Health Sciences
5. Focus the university's real estate strategy